



HISTORIC BRIDGE #14202
COUNTY ROAD 315
JACKSON COUNTY
CONCRETE ARCH, DECK - CLOSED SPANDREL
CROSSES - UNNAMED BRANCH
DATE OF CONSTRUCTION - 1930
BUILDER - UNKNOWN
HISTORIC BRIDGE INVENTORY DATE - 2005
SHPO NUMBER - JA0516
HAER NUMBER -
DATE LISTED ON NATIONAL REGISTER -
LAT./LONG. 35:28:00.51, -91:23:51.69

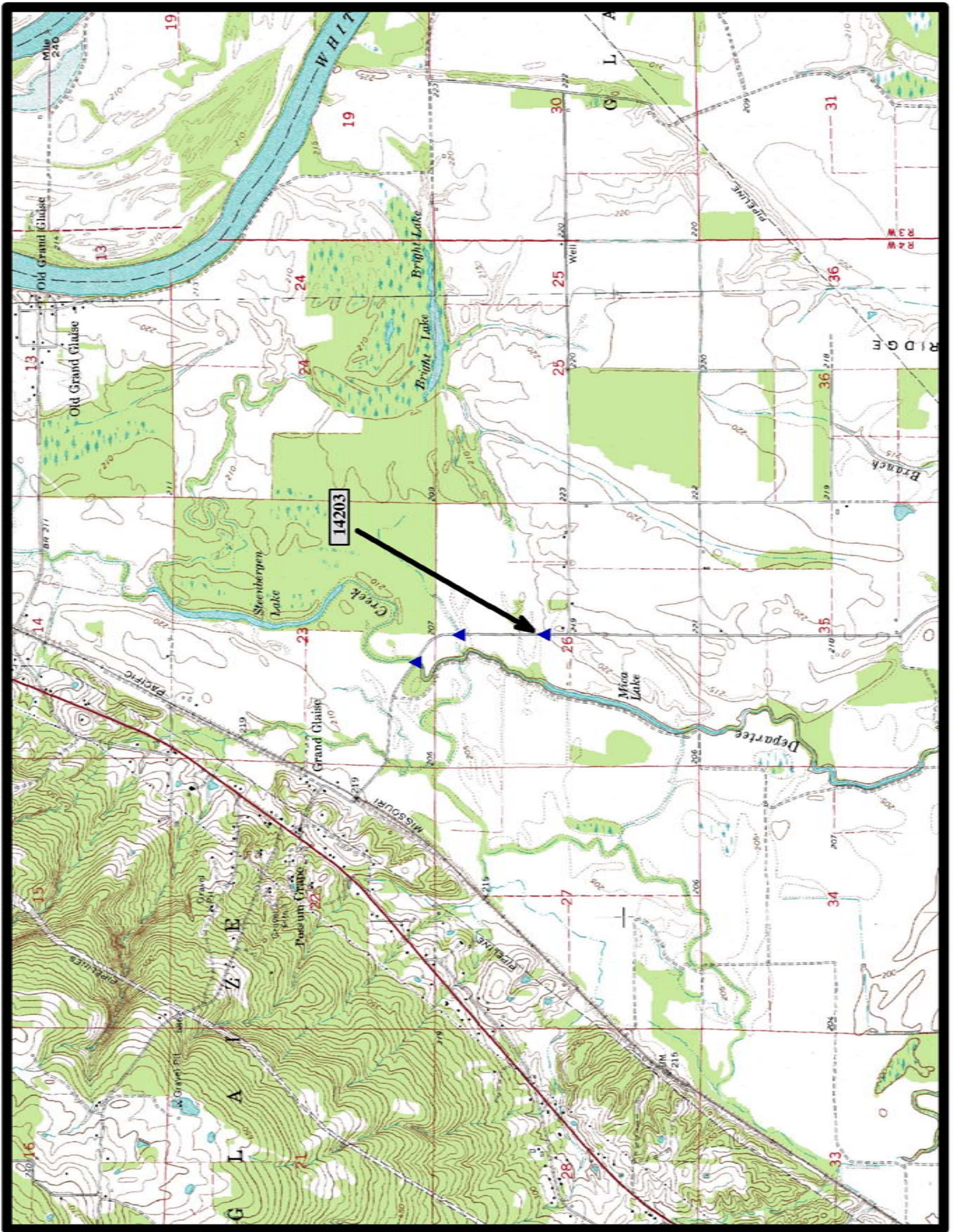


↑
North

Bradford 7.5 min. Quad



HISTORIC BRIDGE #14203
COUNTY ROAD 315
JACKSON COUNTY
CONCRETE ARCH, DECK - CLOSED SPANDREL
CROSSES - UNNAMED BRANCH
DATE OF CONSTRUCTION - 1930
BUILDER - UNKNOWN
HISTORIC BRIDGE INVENTORY DATE - 2005
SHPO NUMBER - JA0517
HAER NUMBER -
DATE LISTED ON NATIONAL REGISTER -
LAT./LONG. 35:27:46.52, -91:23:52.03

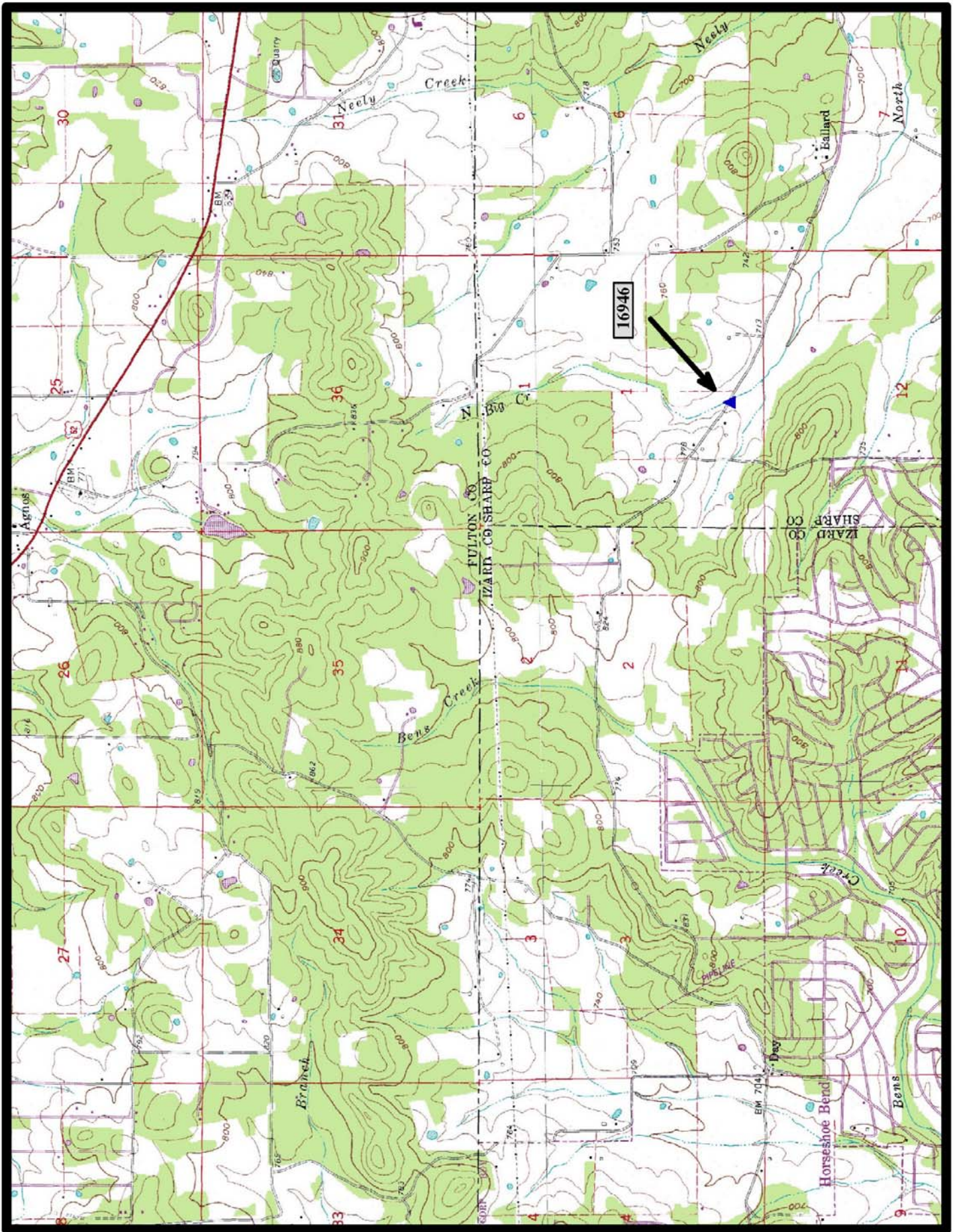


↑
North

Bradford 7.5 min. Quad



HISTORIC BRIDGE #16946
PEACE VALLEY ROAD (CO. RD. 46)
SHARP COUNTY
CONCRETE ARCH, DECK - CLOSED SPANDREL
CROSSES - UNNAMED CREEK
DATE OF CONSTRUCTION - 1936
BUILDER - UNKNOWN
HISTORIC BRIDGE INVENTORY DATE - 2005
SHPO NUMBER - SH0153
HAER NUMBER -
DATE LISTED ON NATIONAL REGISTER -
LAT./LONG. 36:14:23.28, -91:41:00.45

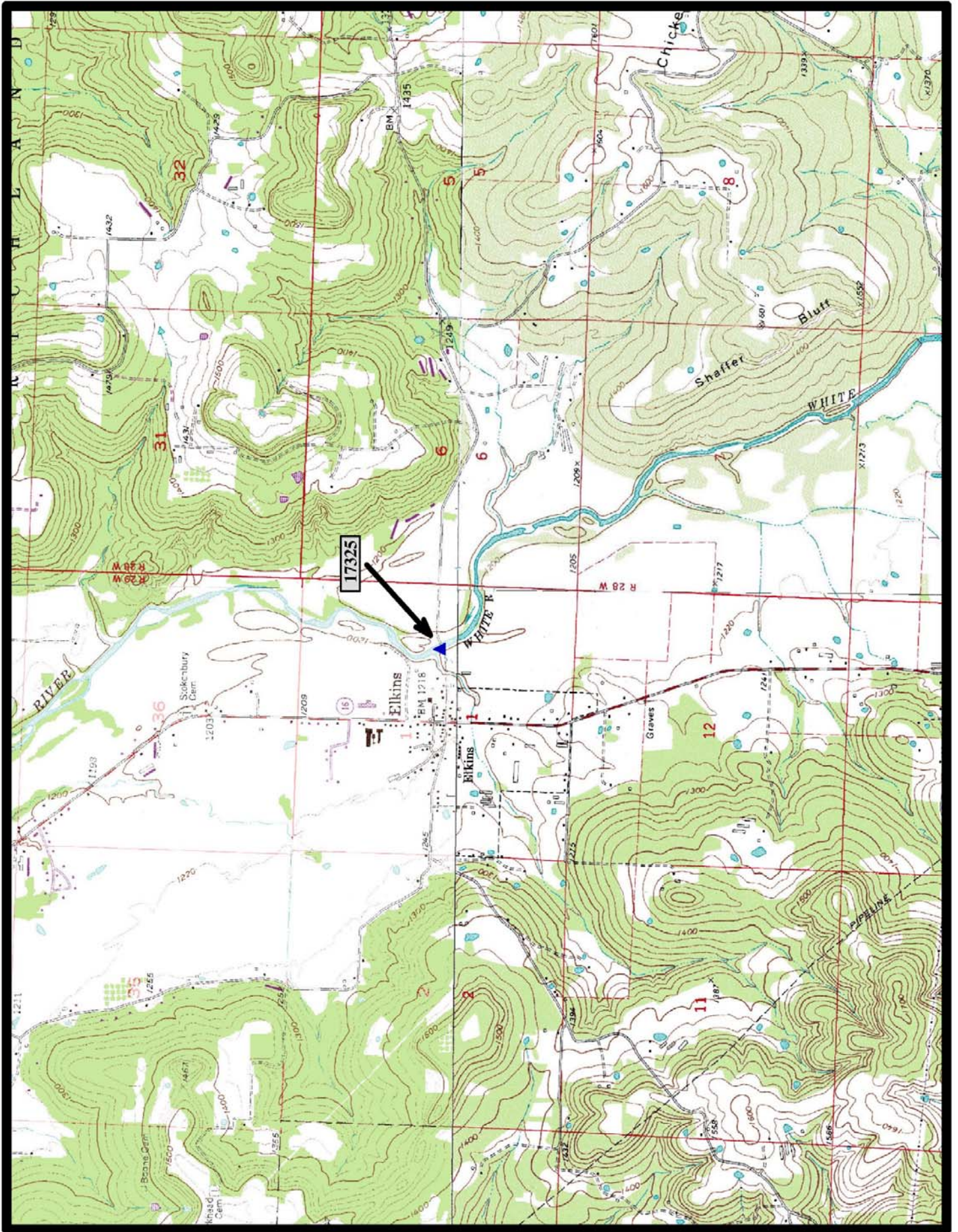


↑
North

Myron 7.5 min. Quad



HISTORIC BRIDGE #17325
COUNTY ROAD 44
WASHINGTON COUNTY
CONCRETE ARCH, DECK - CLOSED SPANDREL
CROSSES - WHITE RIVER
DATE OF CONSTRUCTION - 1921
BUILDER - LUTEN BRIDGE COMPANY, KNOXVILLE, TN
HISTORIC BRIDGE INVENTORY DATE - 2005
SHPO NUMBER - WA0962
HAER NUMBER -
DATE LISTED ON NATIONAL REGISTER - 1/24/2008
LAT./LONG. 36:00:03.26, -94:00:13.78

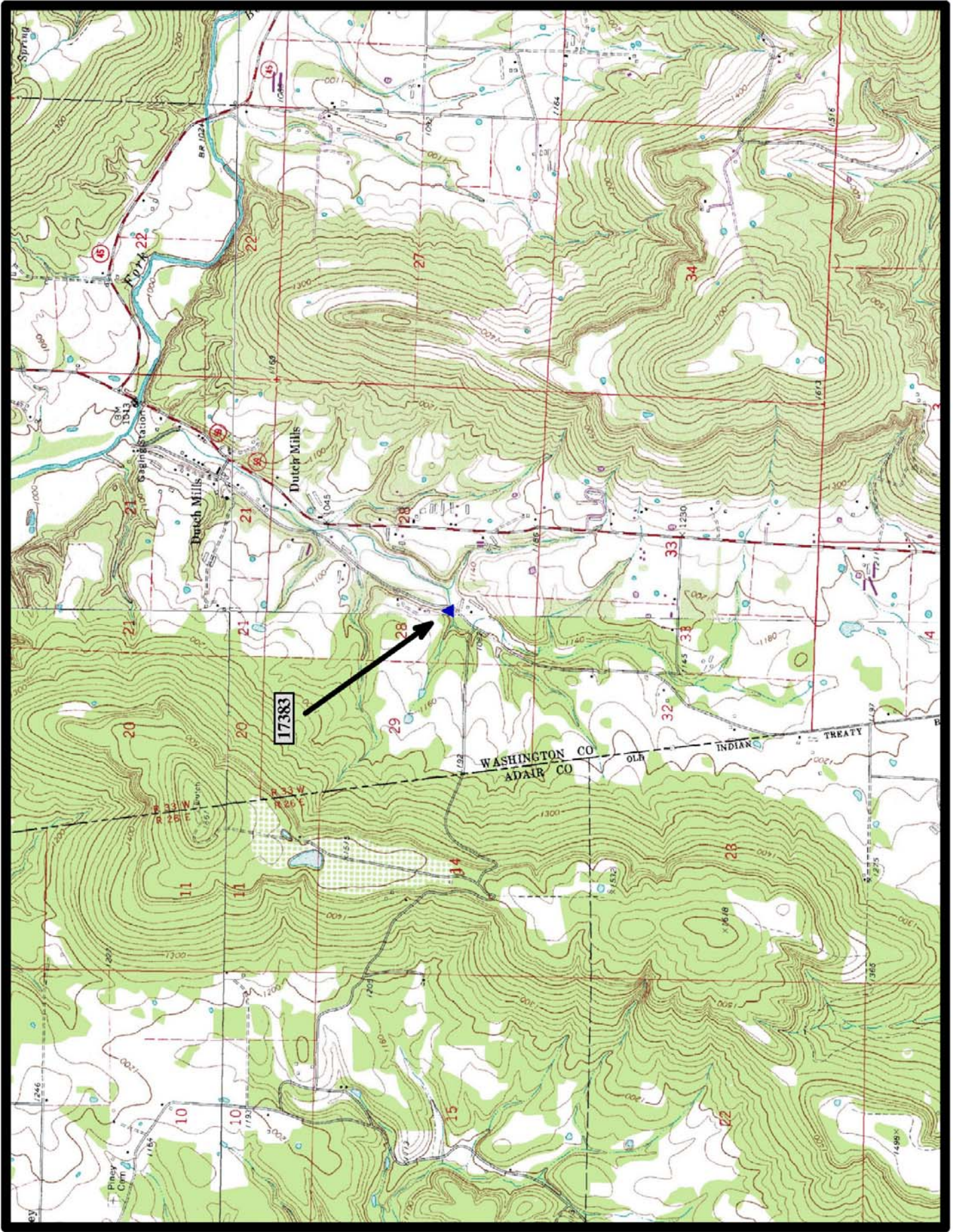


←
North

Elkins, Goshen, Sulphur City, Durham 7.5 min. Quads



HISTORIC BRIDGE #17383
COUNTY ROAD 464
WASHINGTON COUNTY
CONCRETE ARCH, DECK - CLOSED SPANDREL
CROSSES - WHITAKER BRANCH
DATE OF CONSTRUCTION - 1936
BUILDER - LUTEN BRIDGE COMPANY, LITTLE ROCK, AR
HISTORIC BRIDGE INVENTORY DATE - 2005
SHPO NUMBER - WA0967
HAER NUMBER -
DATE LISTED ON NATIONAL REGISTER - 1/24/2008
LAT./LONG. 35:51:48.48, -94:29:58.84



←
North

Evansville 7.5 min. Quad